



REGENT COURT

Livery Street, Leamington Spa, CV32 4NP

**SHELDON
BOSLEY
KNIGHT**

LAND AND
PROPERTY
PROFESSIONALS

Property Description

*** AVAILABLE NOW -DEPOSIT ALTERNATIVE AVAILABLE *** This spacious two-bedroom first floor apartment is positioned right in the heart of Leamington Spa, in the fashionable "Regents Court" development, a pedestrianised arcade with bustling cafes and excellent shopping facilities.

The accommodation comprises in brief: Entrance hall, storage cupboard which houses the washing machine, open plan living room/kitchen diner with appliances (integrated fridge, freezer & dishwasher) and Juliet balcony.

Generous main bedroom with built in wardrobes and ensuite shower room, second double bedroom and bathroom with full suite including shower over bath.

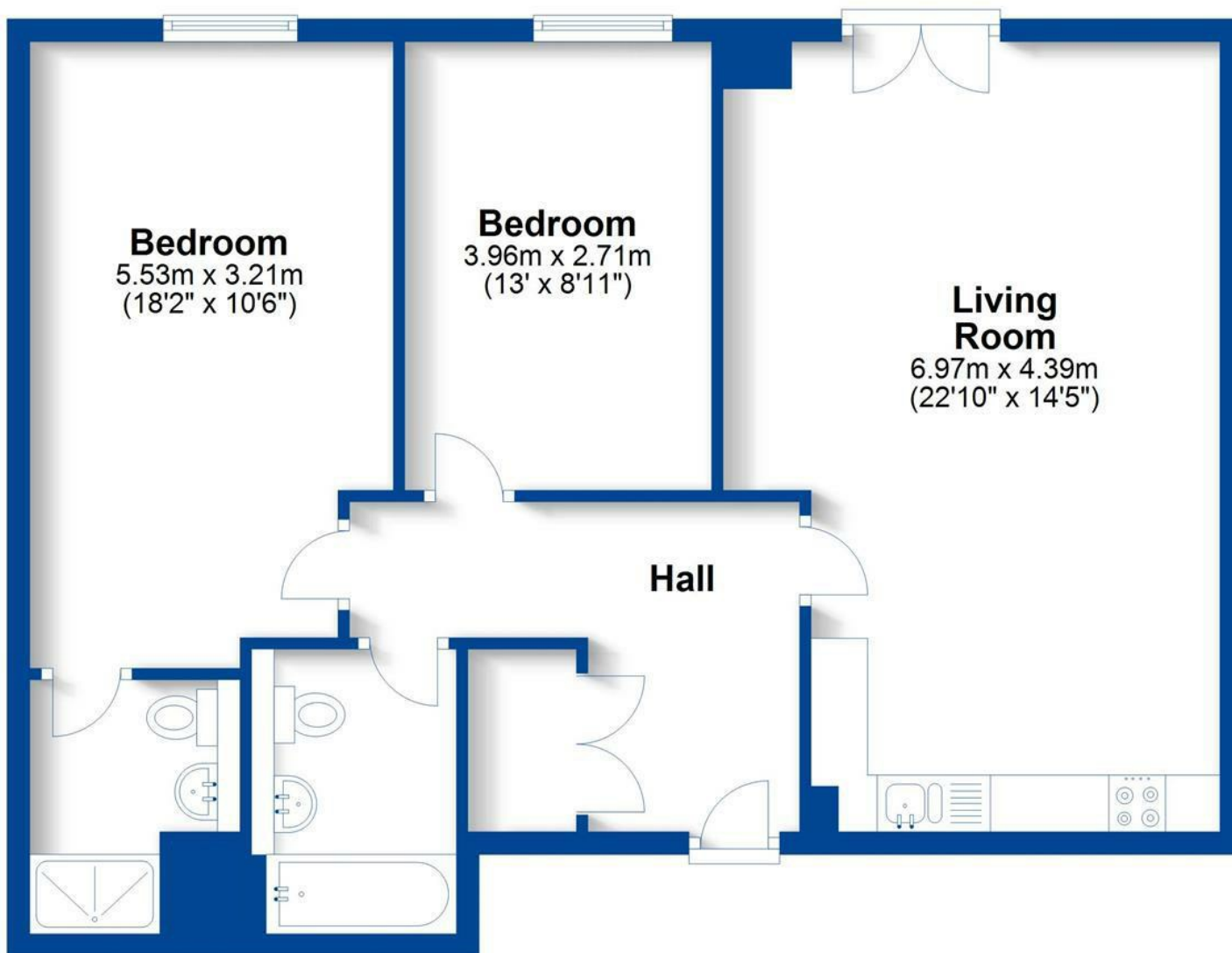
With lift access to all floors and secure gated parking for one car and intercom system this property is offered PART FURNISHED (as seen on the photos). Council Tax Band D. Energy Rating D. Sorry no pets permitted within this complex.





First Floor

Approx. 76.6 sq. metres (824.2 sq. feet)



Total area: approx. 76.6 sq. metres (824.2 sq. feet)

This plan is for illustration purposes only and should not be relied upon as a statement of fact

Key Features

- AVAILABLE NOW -DEPOSIT ALTERNATIVE AVAILABLE
- Leamington Spa
- Two Bedrooms, Two Bathrooms
- First Floor Apartment
- Part-Furnished
- Town Centre Location
- Secure Parking for One
- Council Tax Band D
- Energy Rating D
- Sorry No Pets Permitted

£1,525 PCM